

Rotatable IR Viewing Port™

Powersmiths Rotatable IR (Infrared) Viewing Port enables safe, non-invasive thermographic imaging of live equipment without exposing maintenance personnel to electrical hazards, including Arc-Flash.

APPLICATIONS

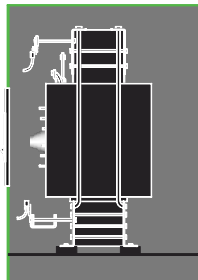
The IR Port significantly increases the viewable area of equipment enclosures, compared to fixed IR windows. It is designed for use on: switchgear, motors, drives, transformers, power distribution units and any other type of equipment that produces heat under normal or abnormal operating conditions.

By installing the IR Port on electrical equipment owners can:

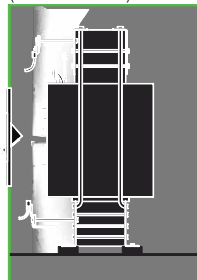
- Reduce risk of injury by eliminating the need for operators to be exposed to live electrical parts
- Save time by allowing quick and comprehensive viewing of an enclosure through a single rotating port
- Save money by providing technicians quick and easy access without an accompanying electrician
- Enhance equipment reliability by facilitating more frequent preventative maintenance inspections

The Rotatable IR Viewing Port can be retrofitted onto existing equipment; or can be factory-installed by original equipment manufacturers.

Traditional Fixed IR Window



Powersmiths Rotatable IR Port (recessed model)



Viewable areas shown in white.



DESCRIPTION

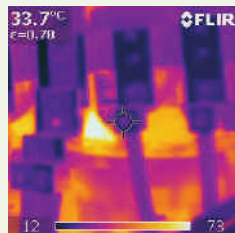
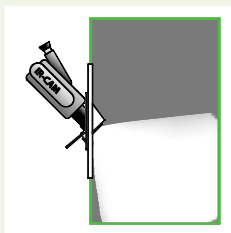
Traditionally, thermal imaging requires technicians to open and inspect live operating equipment. Recently enacted Arc Flash Legislation requires that persons exposed to live electrical equipment wear specialized protective equipment and follow new stricter working conditions. Compliance with this legislation has increased the cost and time required for predictive and preventative thermographic inspections.

An alternate approach relies on the installation of infrared viewing windows on equipment enclosures. These allow operators to thermal-scan interior surfaces without opening the enclosure, but their fixed position can leave some areas of enclosures hidden from view.

Powersmiths IR Port overcomes the limitations of both traditional approaches by providing a full 360 degree viewing radius; substantially expanding the viewing scope of fixed IR windows while eliminating the need for technicians to engage in the risky practice of opening enclosures to conduct inspections.

KEY FEATURES

- Enables thorough thermographic inspections without exposing personnel to live electrical components and associated Arc Flash hazards
- Substantially increases the viewing area compared to fixed IR windows
- Makes preventative and predictive maintenance programs easier and less costly to implement
- Safeguards equipment assets
- Helps avoid operational disruptions



Above shows one view taken by an IR camera through the Powersmiths Rotatable IR Viewing Port.